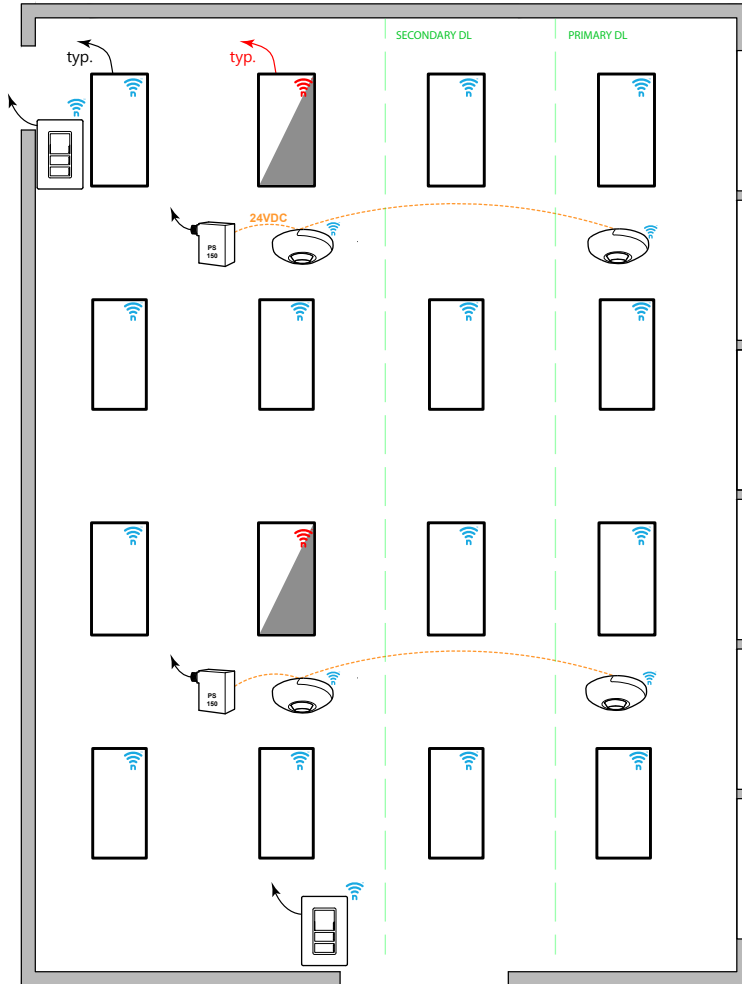


## OPEN OFFICE: NLIGHT ENABLED FIXTURES & POWERED DEVICES



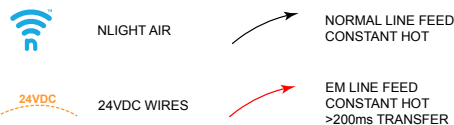
### T24 COMPLIANT SEQUENCE OF OPERATION

- ✓ **AREA CONTROLS §130.1a**
  - SINGLE POLE DIMMING SWITCH
  - ON/OFF/RAISE/LOWER
- ✓ **MULTILEVEL LIGHTING CONTROLS §130.1b**
  - FIXTURES ARE NLIGHT ENABLED.
  - PROVIDE UNSWITCHED HOT TO ALL LUMINAIRES
- ✓ **AUTO SHUT-OFF §130.1c**
  - LIGHTS SHALL AUTOMATICALLY TURN OFF WHEN UNOCCUPIED
- ✓ **DAYLIGHT CONTROLS §130.1d**
  - DAYLIGHT SENSOR IN PRIMARY DAYLIGHT ZONE TO CONTROL BOTH PRIMARY AND SECONDARY DAYLIGHT ZONE (IF APPLICABLE)
  - EXEMPT IF GENERAL LIGHTING LOAD IN DAYLIGHT ZONE IS <120W

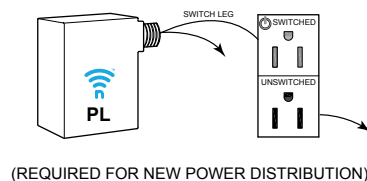
#### NOTES:

- THIS DIAGRAM REPRESENTS STANDALONE ROOM
- NLIGHT ECLYPSE CONTROLLER AND NLIGHT AIR ADAPTER CAN BE UTILIZED FOR NETWORK CONTROL, DEMAND RESPONSE, AND/OR BMS INTERFACE
- OCCUPANCY SENSORS CAN BE ENABLED OR DISABLED BASED ON TIME SCHEDULE







### DIAGRAM LEGEND



### PLUG LOAD CONTROL DIAGRAM



### BILL OF MATERIAL

QTY	PRODUCT #	DESCRIPTION
	-	<b>RPP20-24V-EFP-G2</b>
		ON/OFF 20 AMPS POWER PACK 24VDC OUTPUT TERMINALS
	2	<b>RCMS-PDT-9-G2</b>
		CEILING MOUNTED OCC. SENSOR + PHOTOCELL. PHOTOCELL IS DUAL ZONE TYPE.
	2	<b>RCMS-PS-150-PDT-9-G2</b>
		CEILING MOUNTED OCC. SENSOR + PHOTOCELL. INCLUDES POWER SUPPLY PS 150 PHOTOCELL IS DUAL ZONE TYPE.
	2	<b>RPODLA-DX-G2</b>
		SINGLE GANG, ONE ZONE DIMMING SWITCH (ON/OFF/RAISE/LOWER) LINE VOLTAGE
	14	-
		NLIGHT AIR ENABLED FIXTURE
	2	-
		NLIGHT AIR ENABLED FIXTURES WITH EM CONSTANT HOT ON INVERTER/GENERATOR