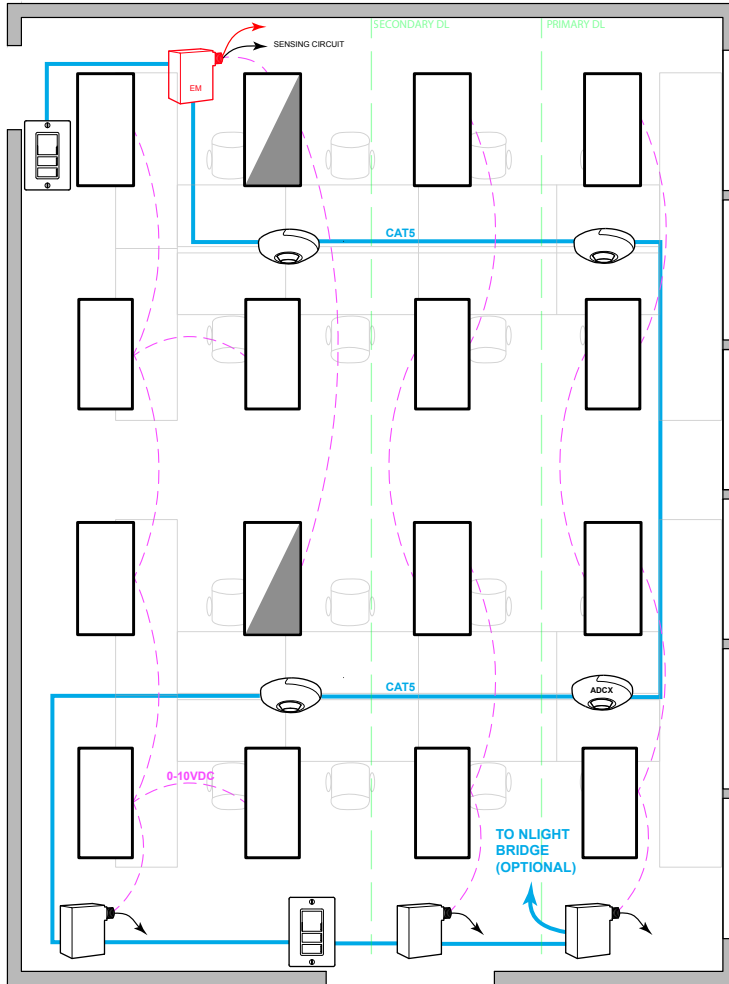


## OPEN OFFICE: 0-10V FIXTURES



### T24 COMPLIANT SEQUENCE OF OPERATION

- ✓ **AREA CONTROLS §130.1a**
  - SINGLE POLE DIMMING SWITCH
  - ON/OFF/RAISE/LOWER
- ✓ **MULTILEVEL LIGHTING CONTROLS §130.1b**
  - FIXTURES ARE 0-10VDC DIMMABLE
  - PROVIDE SWITCH LEG FROM RELAY TO ALL LUMINAIRES
- ✓ **AUTO SHUT-OFF §130.1c**
  - LIGHTS SHALL AUTOMATICALLY TURN OFF WHEN UNOCCUPIED
- ✓ **DAYLIGHT CONTROLS §130.1d**
  - DAYLIGHT SENSOR IN PRIMARY DAYLIGHT ZONE TO CONTROL BOTH PRIMARY AND SECONDARY DAYLIGHT ZONE (IF APPLICABLE).
  - EXEMPT IF GENERAL LIGHTING LOAD IN DAYLIGHT ZONE IS <120W

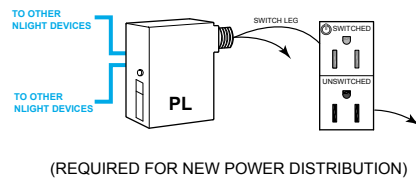
#### NOTES:

- THIS DIAGRAM REPRESENTS STANDALONE ROOM
- NLIGHT ECLYPSE CONTROLLER AND BRIDGES CAN BE UTILIZED FOR NETWORK CONTROL, DEMAND RESPONSE, AND/OR BMS INTERFACE
- OCCUPANCY SENSORS CAN BE ENABLED OR DISABLED BASED ON TIME SCHEDULE

### DIAGRAM LEGEND



### PLUG LOAD CONTROL DIAGRAM



### BILL OF MATERIAL

QTY	PRODUCT #	DESCRIPTION
-	<b>NPP20-PL</b>	ON/OFF 20 AMPS POWER PACK.
1	<b>NCM-PDT-9-ADCX-RJB</b>	CEILING MOUNTED OCC. SENSOR +PHOTOCELL. PHOTOCELL IS DUAL ZONE TYPE.
3	<b>NCM-PDT-9-RJB</b>	CEILING MOUNTED OCCUPANCY SENSOR.
2	<b>NPODMA-DX</b>	SINGLE GANG, SINGLE DIMMING SWITCH
3	<b>NPP16-D-EFP</b>	0-10VDC 16 AMP POWER PACK
1	<b>NPP16-D-ER-EFP</b>	0-10VDC 16 AMP 90 MIN. EM POWER PACK