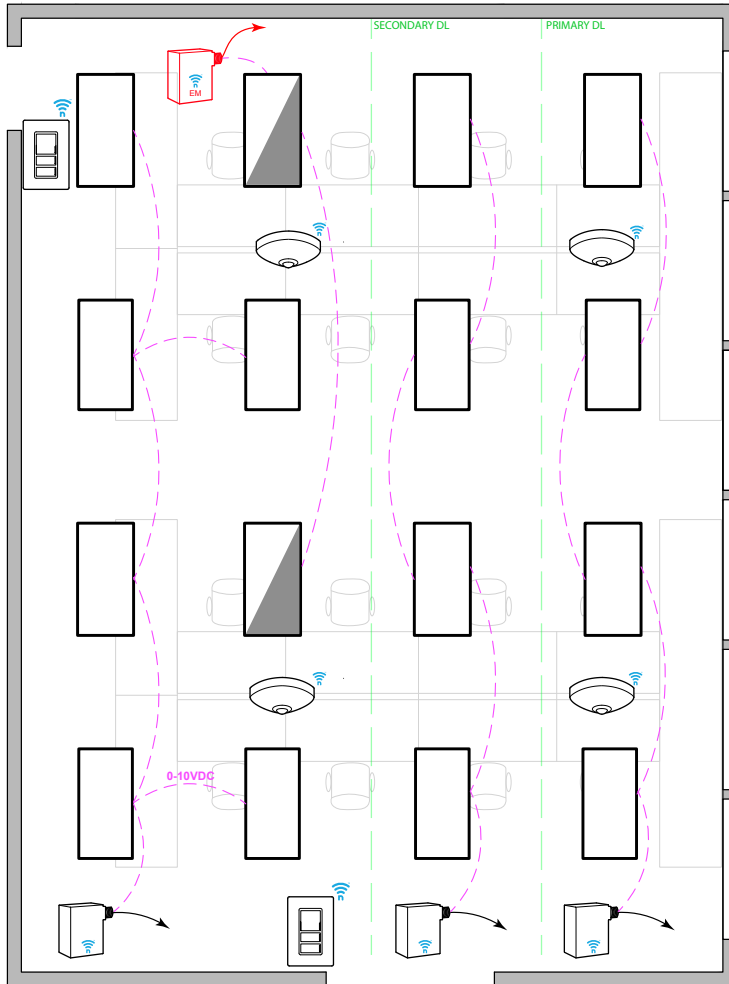


OPEN OFFICE: 0-10V FIXTURES & BATTERY DEVICES



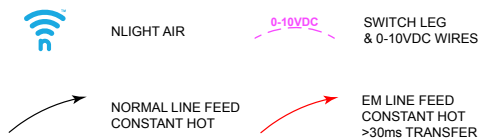
T24 COMPLIANT SEQUENCE OF OPERATION

- ✓ **AREA CONTROLS §130.1a**
 - SINGLE POLE DIMMING SWITCH
 - ON/OFF/RAISE/LOWER
- ✓ **MULTILEVEL LIGHTING CONTROLS §130.1b**
 - FIXTURES ARE 0-10VDC DIMMABLE
 - PROVIDE SWITCH LEG FROM RELAY TO ALL LUMINAIRES
- ✓ **AUTO SHUT-OFF §130.1c**
 - LIGHTS SHALL AUTOMATICALLY TURN OFF WHEN UNOCCUPIED
- ✓ **DAYLIGHT CONTROLS §130.1d**
 - DAYLIGHT SENSOR IN PRIMARY DAYLIGHT ZONE TO CONTROL BOTH PRIMARY AND SECONDARY DAYLIGHT ZONE (IF APPLICABLE).
 - EXEMPT IF GENERAL LIGHTING LOAD IN DAYLIGHT ZONE IS <120W

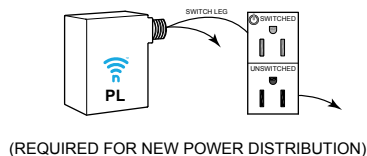
NOTES:

- THIS DIAGRAM REPRESENTS STANDALONE ROOM
- NLIGHT ECLYPSE CONTROLLER AND NLIGHT AIR ADAPTER CAN BE UTILIZED FOR NETWORK CONTROL, DEMAND RESPONSE, AND/OR BMS INTERFACE
- OCCUPANCY SENSORS CAN BE ENABLED OR DISABLED BASED ON TIME SCHEDULE

DIAGRAM LEGEND



PLUG LOAD CONTROL DIAGRAM



BILL OF MATERIAL

QTY	PRODUCT #	DESCRIPTION
1	RPP20-24V-EFP-G2	ON/OFF 20 AMP POWER PACK 24VDC OUTPUT TERMINALS
3	RPP20-D-EFP-G2	0-10VDC 20 AMP POWER PACK.
1	RPP20-D-EM-EFP-G2	0-10VDC 20 AMP 90 MIN. EM POWER PACK. REQUIRED > 30ms POWER INTERRUPT ALTERNATE: RPP20-D-ER-G2 (SHUNTED)
4	RCMSB-7-G2	CEILING MOUNTED OCCUPANCY SENSOR + PHOTOCELL. PHOTOCELL IS DUAL ZONE TYPE. BATTERY POWERED
2	RPODBA-DX-G2	SINGLE GANG, ONE ZONE DIMMING SWITCH (ON/OFF/RAISE/LOWER). BATTERY POWERED