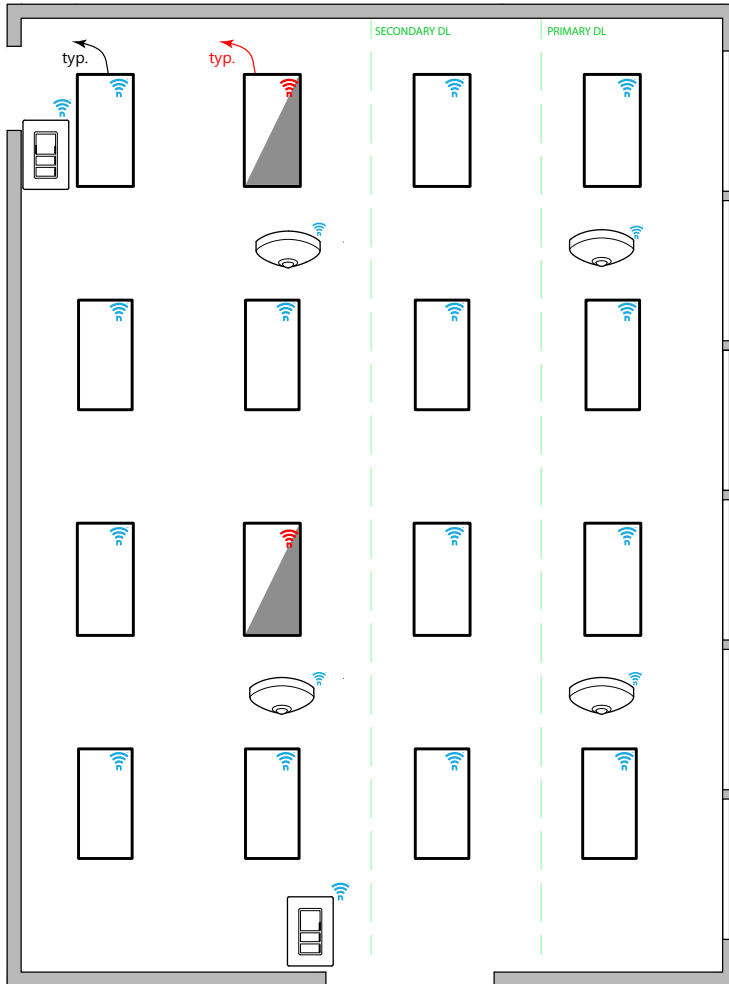


## OPEN OFFICE: NLIGHT ENABLED FIXTURES & BATTERY DEVICES



### T24 COMPLIANT SEQUENCE OF OPERATION

- ✓ **AREA CONTROLS §130.1a**
  - SINGLE POLE DIMMING SWITCH
  - ON/OFF/RAISE/LOWER
- ✓ **MULTILEVEL LIGHTING CONTROLS §130.1b**
  - FIXTURES ARE NLIGHT ENABLED FIXTURES
  - PROVIDE UNSWITCHED HOT TO ALL LUMINAIRES.
- ✓ **AUTO SHUT-OFF §130.1c**
  - LIGHTS SHALL AUTOMATICALLY TURN OFF WHEN UNOCCUPIED
- ✓ **DAYLIGHT CONTROLS §130.1d**
  - DAYLIGHT SENSOR IN PRIMARY DAYLIGHT ZONE TO CONTROL BOTH PRIMARY AND SECONDARY DAYLIGHT ZONE (IF APPLICABLE).
  - EXEMPT IF GENERAL LIGHTING LOAD IN DAYLIGHT ZONE IS <120W

#### NOTES:

- THIS DIAGRAM REPRESENTS STANDALONE ROOM
- NLIGHT ECLYPSE CONTROLLER AND NLIGHT AIR ADAPTER CAN BE UTILIZED FOR NETWORK CONTROL, DEMAND RESPONSE, AND/OR BMS INTERFACE
- OCCUPANCY SENSORS CAN BE ENABLED OR DISABLED BASED ON TIME SCHEDULE

### DIAGRAM LEGEND



NLIGHT AIR

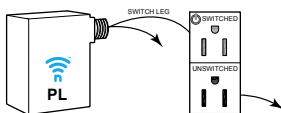


NORMAL LINE FEED  
CONSTANT HOT








EM LINE FEED  
CONSTANT HOT  
>200ms TRANSFER

### PLUG LOAD CONTROL DIAGRAM



(REQUIRED FOR NEW POWER DISTRIBUTION)

### BILL OF MATERIAL

	QTY	PRODUCT #	DESCRIPTION
	-	<b>RPP20-24V-EFP-G2</b>	ON/OFF 20 AMP POWER PACK 24VDC OUTPUT TERMINALS
	4	<b>RCMSB-7-G2</b>	CEILING MOUNTED OCC. SENSOR + PHOTOCELL PHOTOCELL IS DUAL ZONE TYPE BATTERY POWERED
	2	<b>RPODBA-DX-G2</b>	SINGLE GANG, ONE ZONE DIMMING SWITCH (ON/OFF/RAISE/LOWER). BATTERY POWERED
	14	-	NLIGHT AIR ENABLED FIXTURES WITH CONSTANT HOT
	2	-	NLIGHT AIR ENABLED FIXTURES WITH EM CONSTANT HOT ON INVERTER/GENERATOR