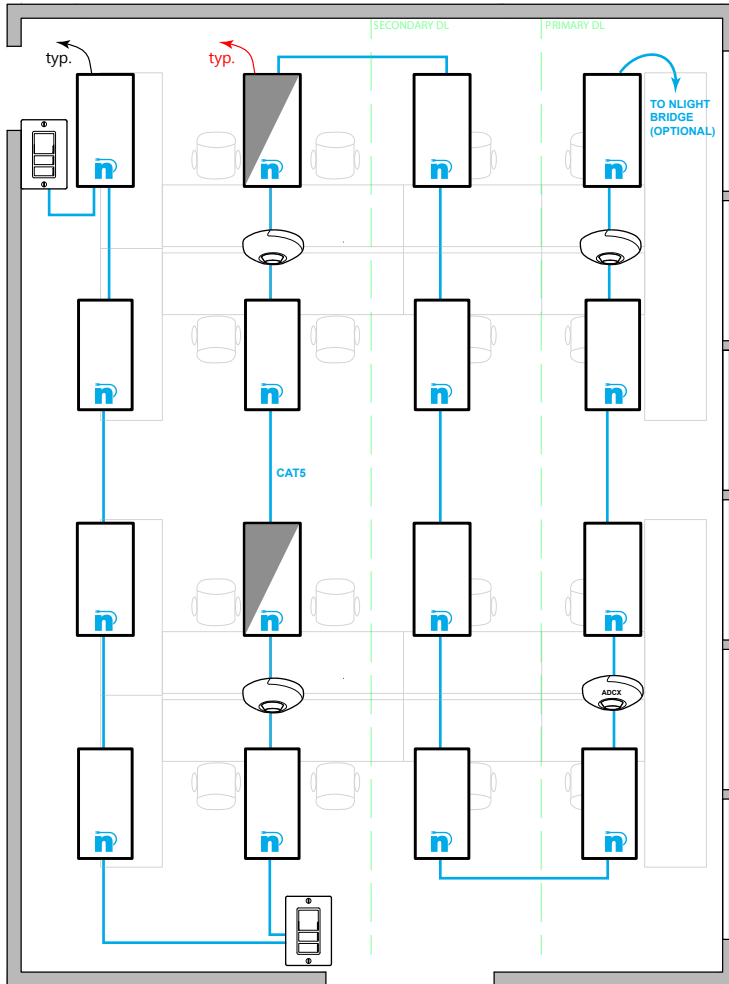


OPEN OFFICE: NLIGHT ENABLED FIXTURES



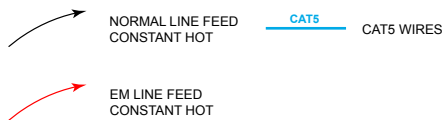
T24 COMPLIANT SEQUENCE OF OPERATION

- ✓ **AREA CONTROLS §130.1a**
 - SINGLE POLE DIMMING SWITCH
 - ON/OFF/RAISE/LOWER
- ✓ **MULTILEVEL LIGHTING CONTROLS §130.1b**
 - FIXTURES ARE NLIGHT ENABLED FIXTURES
 - PROVIDE UNSWITCHED HOT TO ALL LUMINAIRES.
- ✓ **AUTO SHUT-OFF §130.1c**
 - LIGHTS SHALL AUTOMATICALLY TURN OFF WHEN UNOCCUPIED
- ✓ **DAYLIGHT CONTROLS §130.1d**
 - DAYLIGHT SENSOR IN PRIMARY DAYLIGHT ZONE TO CONTROL BOTH PRIMARY AND SECONDARY DAYLIGHT ZONE (IF APPLICABLE).
 - EXEMPT IF GENERAL LIGHTING LOAD IN DAYLIGHT ZONE IS <120W

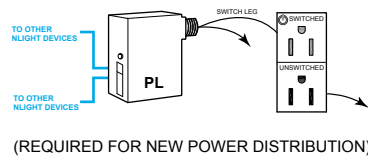
NOTES:

- THIS DIAGRAM REPRESENTS STANDALONE ROOM
- NLIGHT ECLYPSE CONTROLLER BRIDGES CAN BE UTILIZED FOR NETWORK CONTROL, DEMAND RESPONSE, AND/OR BMS INTERFACE
- OCCUPANCY SENSORS CAN BE ENABLED OR DISABLED BASED ON TIME SCHEDULE




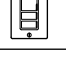

DIAGRAM LEGEND



PLUG LOAD CONTROL DIAGRAM



BILL OF MATERIAL

	QTY	PRODUCT #	DESCRIPTION
	-	NPP20-PL	ON/OFF 20 AMPS POWER PACK.
	1	NCM-PDT-9-ADCX-RJB	CEILING MOUNTED OCC. SENSOR +PHOTOCELL. PHOTOCELL IS DUAL ZONE TYPE.
	1	NCM-PDT-9-RJB	CEILING MOUNTED OCCUPANCY SENSOR.
	2	NPODMA-DX	SINGLE GANG, SINGLE ZONE DIMMING SWITCH
	16	-	NLIGHT ENABLED FIXTURE