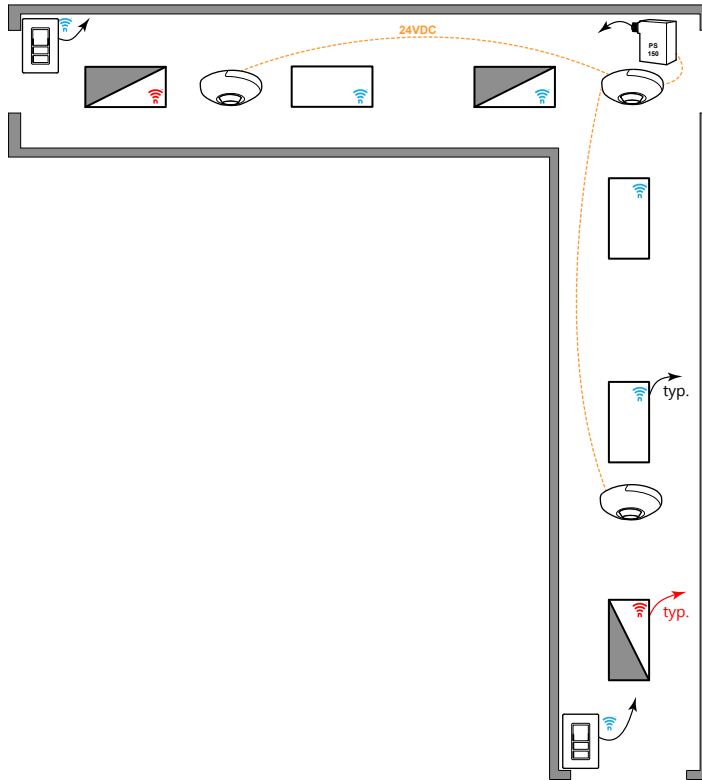


## CORRIDOR: NLIGHT AIR ENABLED FIXTURES & POWERED DEVICES



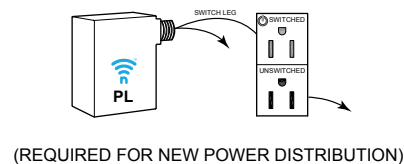
### T24 COMPLIANT SEQUENCE OF OPERATION

- ✓ **AREA CONTROLS §130.1a**
  - SINGLE POLE DIMMING SWITCH
  - ON/OFF/RAISE/LOWER
  - 3 WAY SWITCH
- ✓ **MULTILEVEL LIGHTING CONTROLS §130.1b**
  - FIXTURES ARE NLIGHT AIR ENABLED AND DIMMABLE
  - PROVIDE UNSWITCHED HOT TO ALL LUMINAIRES
- ✓ **AUTO SHUT-OFF §130.1c**
  - LIGHTS AUTOMATICALLY GO TO 100% WHEN OCCUPIED, AND RECUDE TO PARTIAL 50% WHEN UNOCCUPIED.
  - SECONDARY TIME OUT IS AVAILABLE TO TURN OFF THE LIGHT IF REQUIRED.
- ✓ **DAYLIGHT CONTROLS §130.1d**
  - EXEMPTED: GENERAL LIGHTING LOAD IN DAYLIGHT ZONE IS <120W

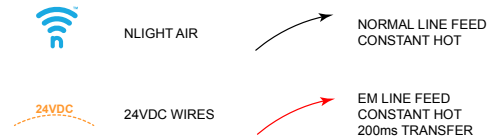
#### NOTES:

- NLIGHT ECLYPSE CONTROLLER AND NLIGHT AIR ADAPTER CAN BE UTILIZED FOR NETWORK CONTROL, DEMAND RESPONSE, AND/OR BMS INTERFACE






### PLUG LOAD CONTROL DIAGRAM



### DIAGRAM LEGEND



### BILL OF MATERIAL

	QTY	PRODUCT #	DESCRIPTION
	2	<b>RPODLA-DX-G2</b>	SINGLE GANG, ONE ZONE DIMMING SWITCH (ON/OFF/RAISE/LOWER) LINE VOLTAGE
	2	<b>RCMS-PDT-9-G2</b>	CEILING MOUNTED OCCUPANCY SENSOR + PHOTOCELL PHOTOCELL IS DUAL ZONE TYPE.
	1	<b>RCMS-PS-150-PDT-9-G2</b>	CEILING MOUNTED OCCUPANCY + PHOTOCELL INCLUDES POWER SUPPLY PS 150 PHOTOCELL IS DUAL ZONE TYPE.
	3	-	NLIGHT AIR ENABLED FIXTURES WITH CONSTANT HOT
	3	-	NLIGHT AIR ENABLED FIXTURES WITH EM CONSTANT HOT ON INVERTER/GENERATOR