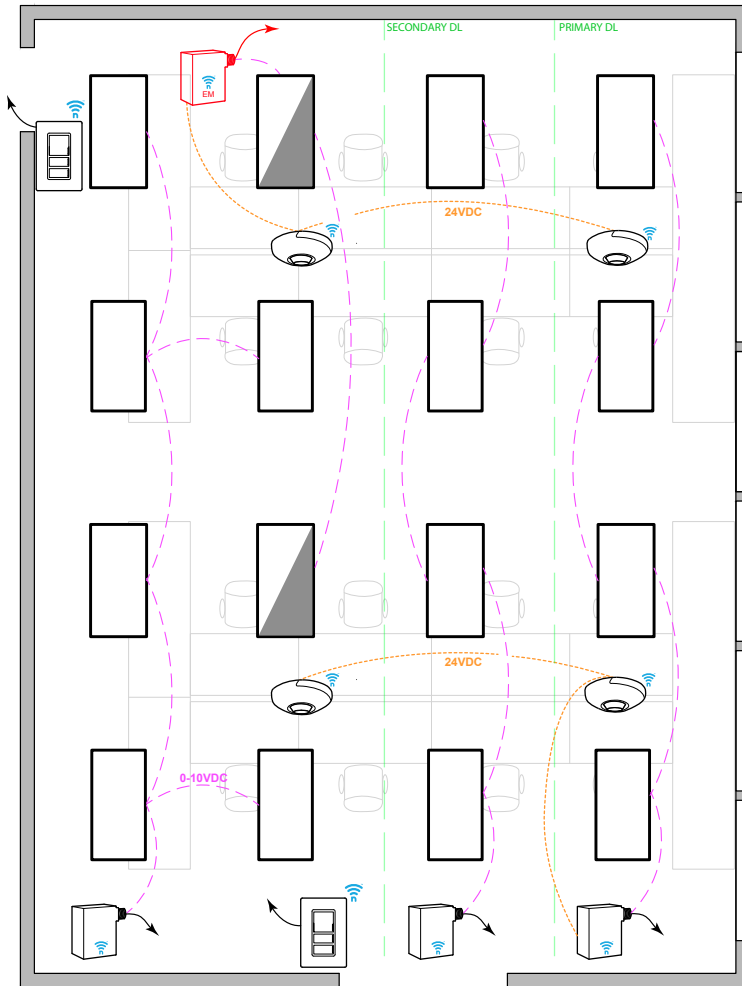


## OPEN OFFICE: 0-10V FIXTURES & POWERED DEVICES



### T24 COMPLIANT SEQUENCE OF OPERATION

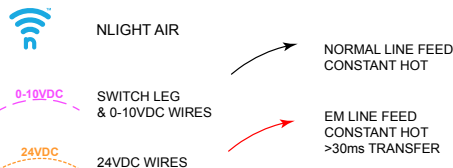
- ✓ **AREA CONTROLS §130.1a**
  - SINGLE POLE DIMMING SWITCH
  - ON/OFF/RAISE/LOWER
- ✓ **MULTILEVEL LIGHTING CONTROLS §130.1b**
  - FIXTURES ARE 0-10VDC DIMMABLE
  - PROVIDE SWITCH LEG FROM RELAY TO ALL LUMINAIRES
- ✓ **AUTO SHUT-OFF §130.1c**
  - LIGHTS SHALL AUTOMATICALLY TURN OFF WHEN UNOCCUPIED
- ✓ **DAYLIGHT CONTROLS §130.1d**
  - DAYLIGHT SENSOR IN PRIMARY DAYLIGHT ZONE TO CONTROL BOTH PRIMARY AND SECONDARY DAYLIGHT ZONE (IF APPLICABLE).
  - EXEMPT IF GENERAL LIGHTING LOAD IN DAYLIGHT ZONE IS <120W

#### NOTES:

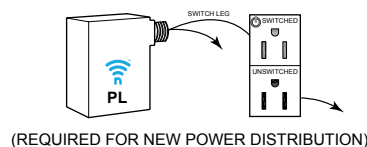
- THIS DIAGRAM REPRESENTS STANDALONE ROOM
- NLIGHT ECLYPSE CONTROLLER AND NLIGHT AIR ADAPTER CAN BE UTILIZED FOR NETWORK CONTROL, DEMAND RESPONSE, AND/OR BMS INTERFACE
- OCCUPANCY SENSORS CAN BE ENABLED OR DISABLED BASED ON TIME SCHEDULE

0-10VDC 20 AMP 90 MIN. EM POWER PACK.  
REQUIRED > 30ms POWER INTERRUPT  
ALTERNATE: RPP20-D-ER-G2 (SHUNTED)

### DIAGRAM LEGEND



### PLUG LOAD CONTROL DIAGRAM



### BILL OF MATERIAL

QTY	PRODUCT #	DESCRIPTION
1	RPP20-24V-EFP-G2	ON/OFF 20 AMP POWER PACK 24VDC OUTPUT TERMINALS
3	RPP20-D-24V-EFP-G2	0-10VDC 20 AMP POWER PACK 24VDC OUTPUT TERMINALS
1	RPP20-D-24V-EM-EFP-G2	0-10VDC 20 AMP 90 MIN. EM POWER PACK 24V OUTPUT TERMINALS. > 30ms POWER INTERRUPT ALT. RPP20-D-24V-ER-G2 (SHUNTED)
4	RCMS-PDT-9-G2	CEILING MOUNTED OCC.SENSOR + PHOTOCELL. PHOTOCELL IS DUAL ZONE TYPE.
2	RPODLA-DX-G2	SINGLE GANG, ONE ZONE DIMMING SWITCH (ON/OFF/RAISE/LOWER) LINE VOLTAGE