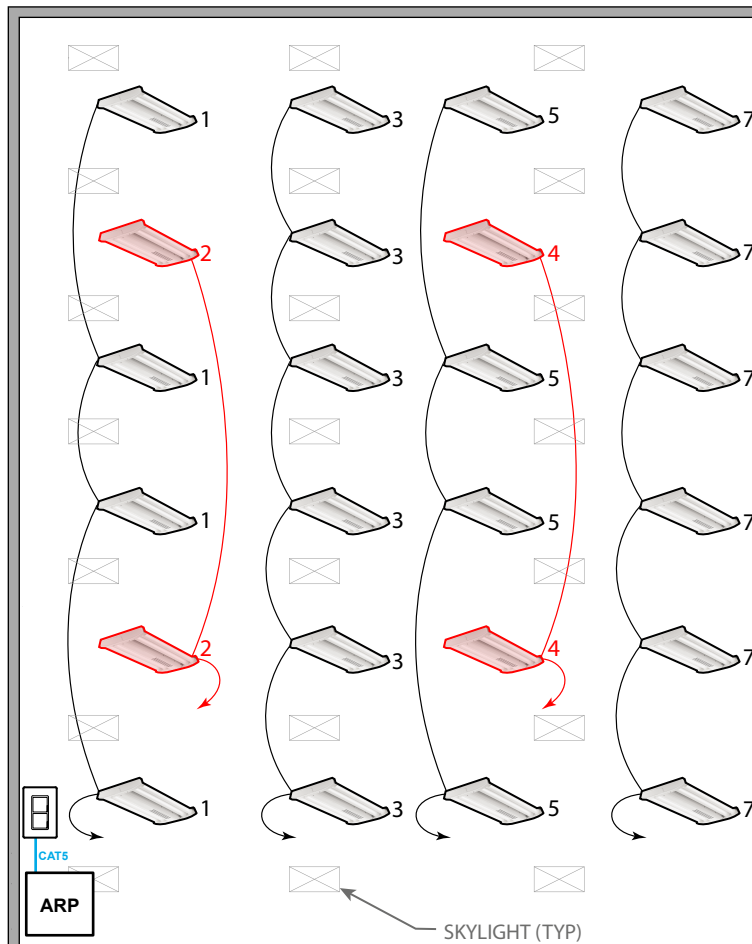


WAREHOUSE ($\leq 0.5W/SQFT$): HIGH-LOW BY SENSOR & AUTO-OFF BY TIME CLOCK



T24 COMPLIANT SEQUENCE OF OPERATION

- ✓ **AREA CONTROLS §130.1a**
 - SINGLE POLE ON/OFF OVERRIDE SWITCH
- ✓ **MULTILEVEL LIGHTING CONTROLS §130.1b**
 - EXEMPT ($\leq 0.5W/SQFT$)
- ✓ **AUTO SHUT-OFF §130.1c**
 - EACH FIXTURE SHALL AUTOMATICALLY DIM TO LOW WHEN UNOCCUPIED
 - LIGHTS SHALL AUTOMATICALLY SHUT OFF BASED ON TIME SCHEDULE
- ✓ **DAYLIGHT CONTROLS §130.1d**
 - EACH FIXTURE HAS A PHOTOCELL FOR AUTOMATIC DAYLIGHT CONTROL
- ✓ **DEMAND RESPONSE §110.12**
 - EXEMPT ($\leq 0.5W/SQFT$)

NOTES:

- THIS DIAGRAM REPRESENTS STANDALONE SYSTEM
- UPGRADE TO NLIGHT ECLYPSE FOR NETWORKED TIME CLOCK CONTROLS AND BMS INTERFACE
- EM FIXTURES WILL TURN ON FULL BRIGHT WHEN NORMAL POWER IS LOST.
- OTHER ARP PANEL SIZES AVAILABLE

ARP RELAY WITH NDTC

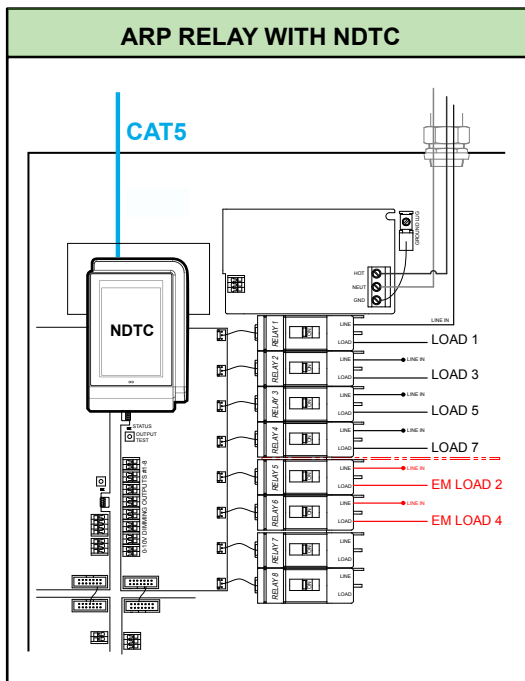


DIAGRAM LEGEND

- NORMAL SWITCH LEG FROM ARP PANEL
- EM SWITCH LEG FROM ARP PANEL
- CAT5 WIRES

BILL OF MATERIAL

	QTY	PRODUCT #	DESCRIPTION
	1	ARP-INTENC08-NLT-8FCR-MVOLT-1VB-SM-SC-DTC	20 AMPS 8 RELAY PANEL FOR SWITCHING, 120-277VAC, ONE VOLTAGE BARRIER FOR EM, DIGITAL TIME CLOCK INCLUDED
	-	IBG--LSXR6-ADC	FIXTURES WITH 360° HIGH MOUNT MOTION SENSOR WITH DIMMING & SWITCHING PHOTOCELL
	-	IBG--C6D0SUEM	EM FIXTURES WITH 360° HIGH MOUNT MOTION SENSOR WITH HIGH/LOW, UL924 LISTED. PHOTOCELL TO BE ENABLED ON SITE VIA PROGRAMMING
	1	NPODMA	SINGLE GANG, SINGLE POLE ON/OFF SWITCH