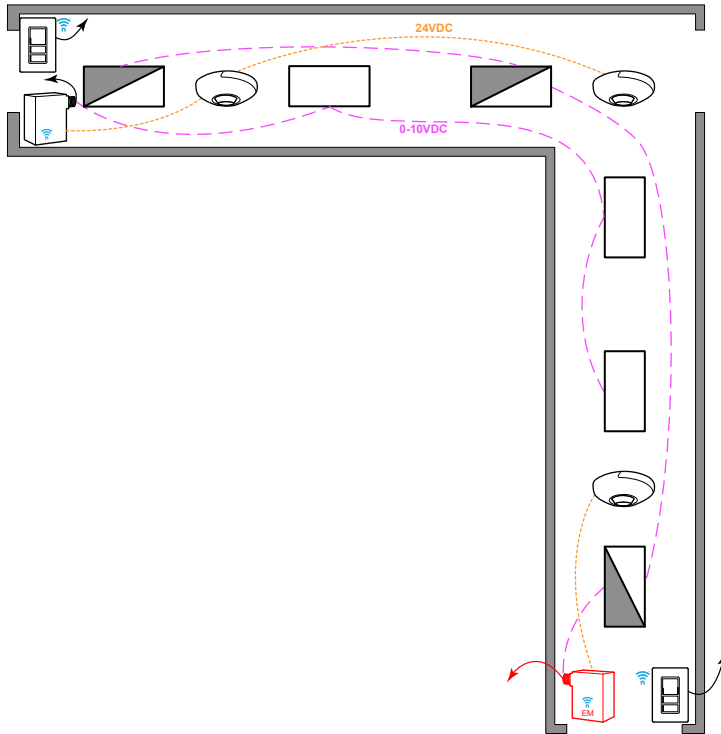


## CORRIDOR: 0-10V FIXTURES & POWERED DEVICES



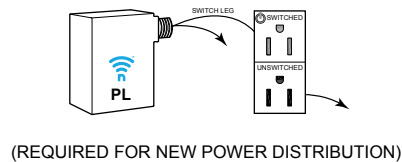
### T24 COMPLIANT SEQUENCE OF OPERATION

- ✓ **AREA CONTROLS §130.1a**
  - SINGLE POLE DIMMING SWITCH
  - ON/OFF/RAISE/LOWER
  - 3 WAY SWITCH
- ✓ **MULTILEVEL LIGHTING CONTROLS §130.1b**
  - FIXTURES ARE 0-10VDC DIMMING
  - PROVIDE SWITCH LEG FROM RELAY TO ALL LUMINAIRES
- ✓ **AUTO SHUT-OFF §130.1c**
  - LIGHTS AUTOMATICALLY GO TO 100% WHEN OCCUPIED, AND RECUDE TO PARTIAL 50% WHEN UNOCCUPIED.
  - SECONDARY TIME OUT IS AVAILABLE TO TURN OFF THE LIGHT IF REQUIRED.
- ✓ **DAYLIGHT CONTROLS §130.1d**
  - EXEMPTED: GENERAL LIGHTING LOAD IN DAYLIGHT ZONE IS <120W

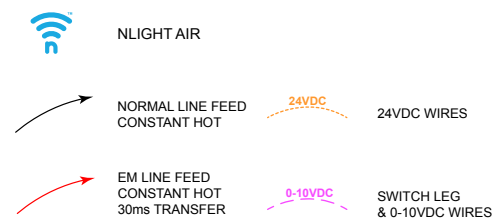
#### NOTES:

- NLIGHT ECLYPSE CONTROLLER AND NLIGHT AIR ADAPTER CAN BE UTILIZED FOR NETWORK CONTROL, DEMAND RESPONSE, AND/OR BMS INTERFACE





### PLUG LOAD CONTROL DIAGRAM



### DIAGRAM LEGEND



### BILL OF MATERIAL

	QTY	PRODUCT #	DESCRIPTION
	2	RPODLA-DX-G2	SINGLE GANG, ONE ZONE DIMMING SWITCH (ON/OFF/RAISE/LOWER) LINE VOLTAGE
	3	RCMS-PDT-9-G2	CEILING MOUNTED OCCUPANCY SENSOR + PHOTOCELL PHOTOCELL IS DUAL ZONE TYPE.
	1	RPP20-D-24V-EFP-G2	0-10VDC 20 AMP POWER PACK 24VDC OUTPUT TERMINALS
	1	RPP20-D-24V-EM-EFP-G2	0-10VDC 20 AMP 90 MIN EM POWER PACK 24VDC OUTPUT TERMINALS. REQUIRES > 30ms POWER INTERRUPT ALTERNATE: RPP20-D-ER-G2 (SHUNTED)